



Intercooler Clamps

WARNING! Please read the whole guide before installing this part.

Legals:

TAARKS intercooler clamps have been designed and are intended for off-road use only. The installation of this part on a vehicle intended for use on public roads may violate laws and regulations in your country/state. Additionally, this part is sold with a LIMITED warranty that only covers defects in manufacturing. This warranty does not cover any damage incurred by using this part. The installation of this part may also void any vehicle warranties. Refer to a performance specialist for proper installation.

After opening the packaging please check to see if any parts are missing or damaged. If something is missing or damaged please contact us immediately. Do not install the product.

Do not modify this part in any way. Modifying the part may result in failure of the part and voids all possible warranties.

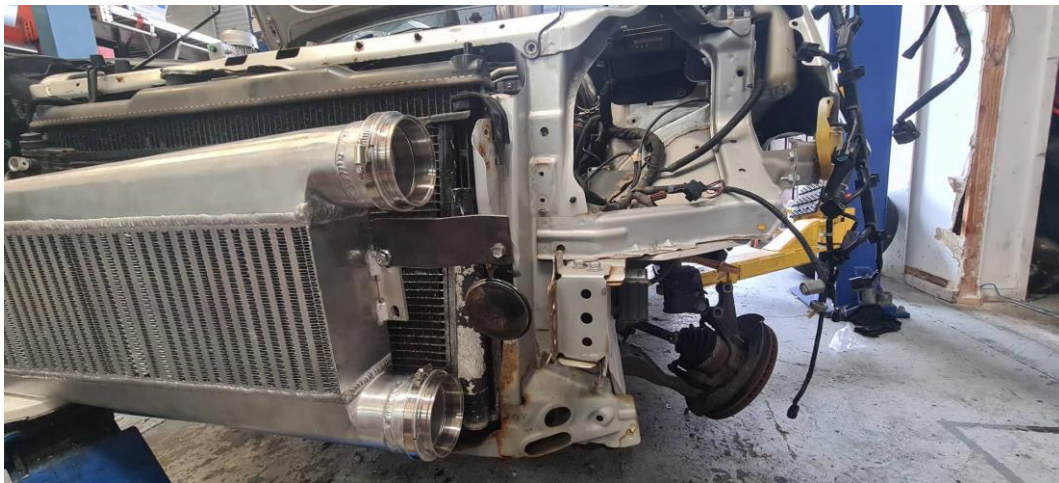
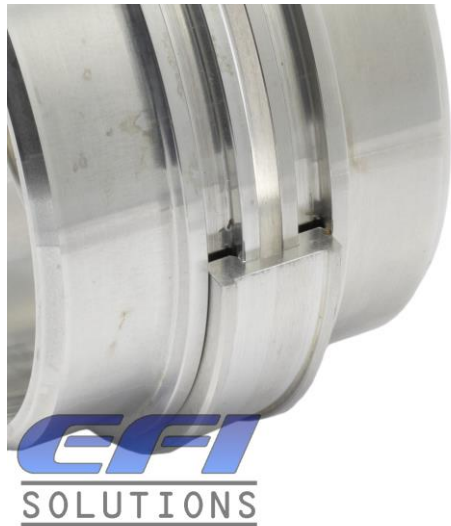
Installation Guide

Remove the o-ring from the ferrules before welding onto intercooler and intake pipes.



When welding the ferrules leave a 2mm gap between the ferrule faces, this allows for movement.

We recommend using the TAARKS install tool. The tool holds the ferrules in place with the perfect gap while fabricating the pipework. Once done you simply remove the tool and install the clamshell clamp. Available here: [CLICK HERE](#)



Re-install the o-rings and apply a thin coating of o-ring or silicone grease to the o-rings.



Next step is remove one of the M6 bolts on the clamp with a 5mm allen key.



Slide the internal ring over the ferrules making sure it covers flanges on each ferrule.



Install the clamp over the internal ring and re-install the M6 bolt and nut. From factory the bolts have a small amount of anti-seize applied to them. If the clamp needs to be removed re-apply a small amount of anti-seize to the bolts. Tighten bolt M6 bolts.



And that's it... You're all done. Enjoy & thank you for supporting TAARKS.